

Oct / Nov 2004

# Almadale Farms Newsletter

## Board of Directors

President:

Kathie Jones 854-8917

kjones@almadalefarms.org

Vice President:

David Kemme 861-2172

Secretary:

Mary Jane Doran 861-7010

Treasurer:

Laurie Johnson 854-0772

Architectural Review

Kevin Douglas 861-2244

Sharon Brawner 854-9369

Lyn Hamann 861-1570

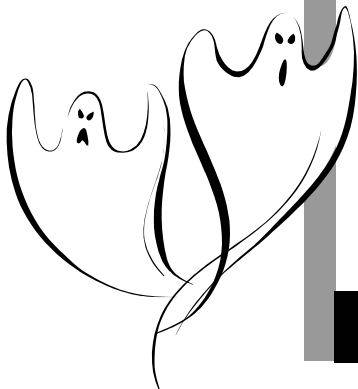


1851 Hartwell Manor N.

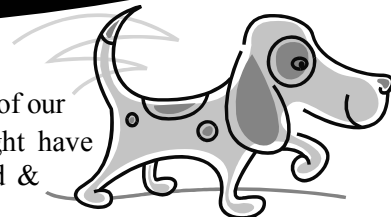
Collierville, TN 38017

Phone: 861-1028

www.almadalefarms.org



*Have you ever seen* a lost dog wandering the streets of our neighborhood? You call to him and check to see if he might have identification. But no. There's nothing except a tired, scared & thirsty look in his eyes. And his eyes are looking up at you!



What if it were your dog or cat that had somehow slipped under your fence or jetted out the door? You walk up and down the streets calling out. When your pet's not home by dinner, you get in your car and start driving, asking kids along the way, "Have they seen your pet?"

Wouldn't it be great if the "missing" & the "found" could call one place to find each other? I know I've been on the "found" end of the stick, so to speak, more than a few times. It's very worrisome and time consuming, especially if the pet is hurt or elderly.

Of course the easiest way to solve this dilemma is to never allow your pet to be without identification. But so often, our pets are without id and even collars. To help our neighbors and our pets, I'd be glad to be the caretaker of a **Pet Registry for Almadale Farms**.

Bring a picture to Daphne of your pet(s) and fill out a form with pertinent info. I'll make a database and have the info available if needed. It'd be great to be able to connect the lost with the found!

*Thanks, Mary Jane Doran*



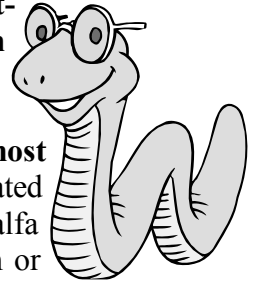
Garage Sale October 22nd & 23rd



## Dead Spots on Lawns

Will Stafford

Many Almadale Farms homeowners are experiencing dead patches—often circular shaped. There are many reasons for these unsightly dead spots. First of all, in many instances, the top soil was peeled from the lawn area at the time of development. Then hybrid bermuda sod—or in a few rare instances—zoysia was laid on the **hard gray clay subsoil, a poor base for sod**. There are other causes for dead patches. **In some cases the cause is white grubs** which are curved, fat, whitish larvae of Japanese beetles and other beetle species which feed on grass roots and rhizomes. Dead brown spots may also be caused by **fungus** which is especially hard to treat. This fungus tends to attack bermuda grass especially during hot, humid weather. **Close cutting, poor drainage, overwatering and excessive nitrogen may all add to the problem** which is basically a result of the very poor soil which lies directly underneath the sod.



The organic books I have read all indicate that the **best treatment for grub related and most other lawn problems is good preventative maintenance**. Smaller areas or spots may be treated by using a pitchfork to aerate, followed by the **spreading of organic additives** such as alfalfa pellets, cottonseed meal and/or soya meal. Then cover the spots with regular organic mulch or top soil. Approximately once every two years I aerate my lawn. **Before having my lawn aerated, I spread generous amounts of alfalfa pellets on the lawn**. The aeration holes allow the pellets to enter the soil, thereby providing a healthier nutritional foundation for the grass. The protein content in the organic substances encourages an increase in earthworms and other beneficial organisms. There are other good organic additives such as cottonseed and/or soya meals. I prefer the alfalfa pellets since they are heavier and less likely to be blown away. Alfalfa pellets are very reasonably price at approximately \$11 per 50 lb. bag and are available at Collierville feed and garden stores. There are other effective ways to treat the lawn problems such as the use of beneficial nematodes. However, this can be very expensive and requires close monitoring. Beneficial nematodes require nourishment—which translated means good organic substances. There are also some chemical solutions which can be used. However, like all chemical sprays and granules, these poisons can kill many beneficial microorganisms and do little to remedy the major underlying problem—the poor health of your lawn.

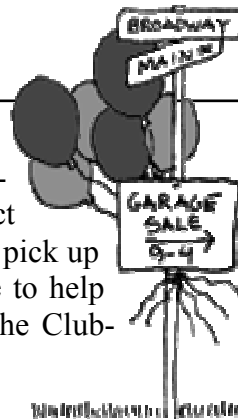
## Almadale Babysitters List Update

With the new school year schedule and neighbors leaving and moving in, we need to update our babysitters list. The list can include pet sitting, house sitting and yard work. Please have your child call **Courtney Dukes** at 850-1383 if they would like to be included on the new list.



## Garage Sale October 22nd & 23rd

Mark your calendar and clean out those attics! The fall garage sale is coming up. We generally put ads in two or three newspapers and highlight some of the items in the sale. Contact **Daphne** (861-1028) a.s.a.p. if you plan to participate. You can pick up balloons at the clubhouse for your mailbox. If you would like to help organize our bi-annual garages sales, please call or stop by the Clubhouse and talk to Daphne.



Collierville Animal Shelter is accepting gently-used donations for their "Flea Market" sale on October 29-30th. All proceeds go to the shelter.

Call Liz 854-7023 or Beth 853-1344 and they will come and pick up your donations. (No clothes or bedding items please.)



# Teen Swim Party

Social Committee

Our end of the summer Teen Swim Night was really a hit. We had over twenty kids show up for music, pizza, cookies & fun. Thanks to **Tina and Steve Thrasher and Laurie Johnson** who hosted the party. All in all a great time!

*See more photos on the web site.*



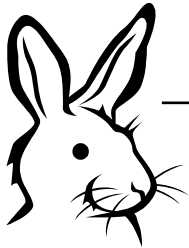
The Almadale Farms Playgroup provides an opportunity for neighborhood moms and their kids, ages newborn through preschool, to meet and play. For more information, contact **Katie Nellesen at 861-9888**

## Almadale Ladies Ornament Exchange

Our annual ornament exchange will be held on **Thursday, December 9th** at the home of **Rene Platten**, 1852 Hartwell Manor N. This is a fun evening open to all the ladies of Almadale Farms. Food and beverages will be provided by the Bunko Ladies and all you need to bring is a wrapped ornament/gift in the \$10-15.00 range. We will use the rowdy, rob from your neighbor format! Please join us for this fun evening.



**NOTICE**  
As per our Covenants (Article VIII, Section 2. (e)), no signs are allowed in yards other than a "for sale" sign. This includes political signs.



## Rabbits Rabbits Rabbits Rabbits Rabbits Rabbits .....

**In case you haven't noticed**, Almadale Farms has an ever increasing number of wild rabbits. I have seen as many as three rabbits frolicking in my neighbor's yard after dark when they become particularly active. Rabbits like to feed at twilight, but they have no rules. I've watched them feeding at dawn and in the middle of the day. **Rabbits will seek out a garden in the spring or fall but they particularly like young succulent plants in the spring.** I have learned the hard way—especially over the last two years—that rabbits are particularly fond of my broccoli. While I have used a deer and rabbit repellent to deter the little broccoli bandits, I haven't been too successful. I've even planted extra lettuce hoping the rabbits will choose the lettuce over the broccoli. At least they don't care for my tomatoes. Cottontails are approximately 15-19 inches in length, weigh 2 to 4 pounds and are a grayish brown. They mate several times a year and each litter can have six or seven young ones. **You don't need a calculator to figure that the possibilities are daunting.** A cottontail's average life expectancy is only 12-15 months. However, they have an extremely high reproductive potential reaching up to four litters per year—with a gestation period of only 28-29 days. Many naturalists theorize that rabbits are becoming more numerous in subdivisions for the same reasons other wild animals have moved to town--their natural habitat is being destroyed at an alarming rate. Landscaped backyards with lots of flowers and shrubbery offer the perfect habitat for rabbits to build their nest-like cavities. Their primary neighborhood predators are cats, redbill hawks and occasionally even coyotes and foxes. Most of the young die within the first month and many die during the winter. A number of repellents have been suggested for harassed gardeners and I'll be happy to provide you with a list if you're interested. As for myself, I've decided that I will just tolerate these furry little critters.

**Will Stafford**





**I love our neighborhood,  
but if you must move,  
now is a great time  
to sell your home!  
Rates are low!!!  
30 YR Fixed 5.5%**

**JoAnn Smith**

Re/Max Elite  
2028 W. Poplar #109

Office: 853-3430  
Cell: 619-0316

# HALL PAINTING & REMODELING

**Highest Quality • Reasonable Rates  
Interior & Exterior • Pressure Cleaning  
Carpentry Repairs • Sheet Rock Repair  
30 Years Combined Experience**

Shain Hall **Licensed & Insured**  
**767-4925**

Almadale Reference Available



## ReShape Fitness for Women

9947 Wolf River Blvd. Ste. 107  
Mon-Fri 7am to 7pm, Sat 8am to 12pm  
850-5502



**30 Minute Workout**  
Tone muscle, increase  
bone density and burn fat.  
First week is FREE  
No Registration Fee for  
first 100 members



Barbara Parkhurst  
Home: 861-5054  
Cell: 218-1952

Sue Taylor  
Home: 853-4416  
Cell: 493-6492

Crye-Leike, Realtors  
Office: 756-8900

We love our neighborhood and the wonderful neighbors that make it so great. However, if you have to move, please give us a call. We have a vested interest in helping you receive "Top Dollar" for your home. Our "Service Team" is here to help make your move a quick and easy one.

**WITH US YOU GET TWO FOR THE PRICE OF ONE!!**

**JUST SOLD  
1886 McCOOL FOREST LANE!!**

**DO YOU DREAM  
IN COLOR?  
FIERY REDS?  
GOLDEN BLONDES?  
SPICY BRUNETTES?**

**NOW  
OPEN!**

**Estilo Salon**

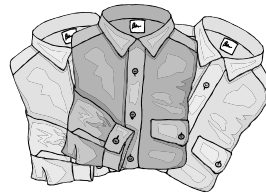
9947 Wolf River Boulevard  
@Houston Levee

**901-853-4496**

**COME IN AND  
REGISTER TO WIN A  
FREE  
CUT & COLOR  
MAKEOVER!!**

# Dexter Cleaners

**And Shirt Laundry**



**20% OFF  
DRY CLEANING  
WITH THIS  
COUPON**

2059 Houston Levee • 753-7393

**Come Find Why We're #1**

## For Sale

Commercial Quality **Fooze Ball Table**—like new \$350  
Sportcraft **Air Hockey Table**—like new \$250

**Storage Units** for child's room, 12 bins each, pine wood  
Primary Colors—\$30 Pastel Colors—\$30

**Pottery Barn Over-Stuffed Chair**  
Dijon color with flowers, mint condition—\$200

**Call 861-6663**

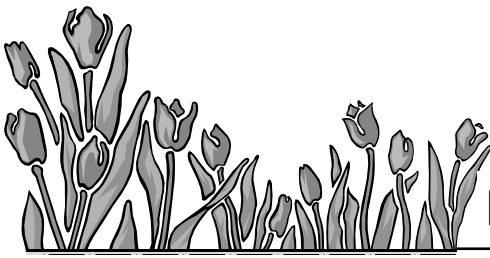
## Steve McMillian Insurance Agency Nationwide Insurance

9947 Wolf River Blvd. Suite 110  
Germantown, TN 38139  
(corner of Wolf River Blvd & Houston Levee)

854-5054

mcmills@nationwide.com

[www.almadalefarms.org](http://www.almadalefarms.org)



## Planting Fall Bulbs

Will Stafford

There are approximately 30 varieties of bulbs and new ones are constantly being developed. The most popular ones are planted in the fall when the temperature is in the 50's. **If you looking for a good target date for planting, consider mid November.** Daffodils may be planted a bit earlier. The selection of bulbs is critical. Look for the largest possible bulbs. Just remember—if you buy smaller bulbs you may well have to wait much longer before they produce. My wife and I have always purchased our bulbs from local garden centers rather than buying through catalogues—although there are some outstanding catalogue sources. **When planting, select a sunny to partially sunny planting location.** Since our falls are normally very dry, I would water the planting area well approximately two days earlier—if needed. Soil preparation is critical—especially since ours is clay based. Some dig and prepare just the holes for the bulbs. That is the lazy way out and a sure formula for later disappointment. I prefer to dig up an entire bed especially if doing a mass planting. Drainage is critical with any plant but especially with bulbs. Dig the bed several inches below the proper planting depth and mix generous amounts of organic matter and sprinkle an inch or so of bone meal—which is preferable—or super-phosphate at the bottom of the hole. This is a critical ingredient in bulb culture. I also like to add alfalfa pellets. **A general rule of thumb is to plant a bulb at a depth of approximately three times its diameter. Be sure to plant the pointy end of the bulb up.** Some experts recommend that bulbs be planted in a triangle formation for a more dramatic effect since planting in a straight line does not produce the same visual impact. After planting, water your bulb site thoroughly. If you are feeling adventuresome and want to go beyond the usual daffodils, tulips and hyacinths, there are other bulbs which can add color and interest to your garden. After the emergence of your bulbs, weeding, watering and maintenance is important.

## Yard Of The Month

Garden Committee

October is the last YOM award for the year. Congratulations to all the winners this year. As always, it is a difficult job choosing just one yard out of the many that stand out. This year's winners include **Jim & Cindy Reddington, Derek & Janeen Verdeyen, Joe & Meredith Massa, Craig & Bonnie Parnell, Joel & Kim Ross** and the September and October winners shown below.

### September



**James & Kathleen Jenkins**  
1966 Almadale Farms Pkwy

### October



**Cliff & Janice Bumpers**  
1884 Chadwick Manor Circle



### Mistletoe & Magic

This was a great event last year where we started our holiday shopping early with creative arts and products. all displayed at the clubhouse!

In order to organize for this year, we need to know how many neighborhood sellers we can expect to take part. Please call **Laurie Johnson** (854-0772) if you'd like to reserve a spot or if you'd like to help organize.

## Big Brothers Big Sisters Adopt A Family Christmas Program

Rene Platten



Just a reminder, Almadale Farms will once again participate in the Adopt a Family program. I will send out a separate flyer when we are assigned a family to share their needs with you. For our new neighbors, this is an incredible program we have participated in for the last 3 years, where we collect funds, household items, and gifts for very needy families. We shop for gifts and deliver, usually right to the family. Please keep this program in mind as you get ready to help others over the holidays. I will be taking on additional responsibilities with BBBS this year so if anyone feels the calling to take on our neighborhood program this year please call me at 861-4183, the rewards far exceed the time commitment.

## Almadale Ladies Bunko

It was great to kick off another year of Bunko and get to catch up with all our neighborhood buddies. We have lost MANY players to moves this year and are in need of a few neighbors to play as regulars. If you can't play on Bunko night, a sub-list is provided. We play Sept-May, usually the 1st Thursday of the month. Bunko is hosted at different players homes, with a co-host. No experience necessary. We have lots of fun—there's more talking than rolling of the dice! Please call **Rene Platten** at 861-4183 if you have any questions. **October Bunko will be held at the home of Sue Taylor on Thursday, October 14th. Date changed due to Fall Break.**



## T.G.I.F

Barbara Parkhust

Our thanks to **Connie and Bob Harper** for hosting T.G.I.F. in August. Bob and Connie are relatively new to "The Farm" and were gracious enough to offer their home for our gathering. We like to have our "new" neighbors participate. It is such a great way to make friends!

September was at the home of **Karen and Don Boothe**. If memory serves me correctly, this is the third time Don and Karen have hosted T.G.I.F. We've enjoyed watching their backyard evolve as Don has personally built decks, arbors, ponds and fountains! Wow! Thanks again to the Booshes.

This month will be at the home of **Phil and Gayla Arvin**. As always, you just need to bring an appetizer or dessert and your beverage of choice. It is a wonderful opportunity to meet new neighbors and catch up with old ones! Please make plans to attend! Watch for the sign at both entrances.

The Town has informed the HOA that we are not allowed to place signs in our median. Signs must be 15' behind the curb or we run the risk of a codes officer taking them.



## Welcome New Neighbors

**James & Virginia Landrem**  
1995 Coors Creek Cove

**Jon & Cari Hurt**  
1994 Coors Creek Cove

**Steven & Christi Pittman**  
1886 McCool Forrest Ln.



Thanks to  
**Abhay Bhargava  
& Laurie Johnson**  
for the 2004  
Directory Update



**Daphne's Office Hours:**  
Tuesday 9:00-3:00 &  
Friday 9:00-12:00

Please look for HOA signs  
indicating TGIF, Board  
Meeting, Bunko, etc.  
located next to the monu-  
ments as you leave or  
enter the neighborhood.