

June / July 07

Almadale Farms Newsletter

Board of Directors

President/Grounds
Kathie Jones 854-8917
kathie@almadalefarms.org

Vice President/Welcome
George Shaffrey 854-6700

Treasurer/Architectural
Review:
Renee Samuels 853-1900
renee@almadalefarms.org

Secretary/Newsletter/Website
Mary Jane Doran 861-7010
maryjane@almadalefarms.org

Whitt Dukes/Social
Tom Powell/Lighting
Bobby Haygood/Pools



1851 Hartwell Manor N.
Collierville, TN 38017
Phone: 861-1028
www.almadalefarms.org

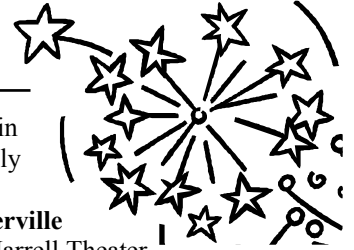
Daphne's Office Hours
Tuesday 9:00-3:00 &
Friday 9:00-12:00

Happy Fourth of July

The Collierville Fire Department recommends that all citizens within our community view and participate in the Town's annual 4th of July fireworks display. All the work is done and safety measures are in place, all you have to do is set back and enjoy the show. **The Collierville fireworks display will be held on July 3rd** at Cox Park near the Harrell Theater and begins around 6:00 pm with entertainment, food, fun and games for the kids. The fireworks will begin around 9:30.

Germantown's Fireworks Extravaganza is held on the 4th and begins at 5:00 pm with fireworks at 9:10 at the Municipal Park on Exeter Road. They feature musical entertainment, free rides, games, moon bounces, crafts and a petting zoo in the early evening, followed by a first-class fireworks display. Call the Parks and Recreation office at 757-7375 for more information.

The State of Tennessee Law, Shelby County Ordinances, and Collierville Ordinances reflect that consumer fireworks are prohibited from being fired in Shelby County, which includes Collierville.



daphneinoffice@almadalefarms.org

Visit www.almadalefarms.org



The Noble Blue Heron

Will Stafford

Last March, my wife and I vacationed eight days in the Guanacaste Province which is located on the Pacific side of Costa Rica. During this period, we treated ourselves to several nature tours—including a 100-150 ft. high wire canopy slide above a beautiful rain forest and a day long tropical river trip on the wild Bebedero River in the Palo Verde National Park. During the cruise we were privileged to see sloths, giant anteaters, iguanas, Congo and white face monkeys, crocodiles, snakes and a vast array of birds—including one of my favorites—the majestic blue heron.

Almadale Farms is privileged to have a beautiful, fully mature blue heron which can often be seen in one of our lakes—usually the clubhouse lake. I'm not certain, but I think he is a male—based on the pictures I have seen. His choice of Almadale Farms is not surprising since his favorite habitats include wetland areas, small inland lakes and ponds—all ready sources of food.

The blue heron is the largest and most widespread heron in North America and is a curious blend of awkwardness and grace. When startled or disturbed, it jumps into flight with a harsh guttural croak and a tangle of legs, wings and neck. However, several slow, deep wing strokes will straighten him out as he disappears over the tree tops and those stilt-like legs are directly behind him while his large head

seems to rest on his shoulders. The blue heron has long legs, a long not so skinny neck and a long bill. It has beautiful colors—a mosaic of bluish gray back, wings and belly, a white crown stripe and a reddish or gray neck.

Our resident blue heron stands approximately four feet tall and has a wing span which must be close to six feet. I recently observed him for approximately thirty minutes while sitting on one of our lake benches. It was absolutely fascinating to watch him slowly and carefully wade along the edge of the lake. His patience seemed endless as he stood motionless, methodically waiting for his next meal to swim beneath his bill. Suddenly he stood statue-still as if frozen and then his head plunged into the water. In a nanosecond he held a fish or frog in his sharp bill.

In addition to frogs and fish, blue herons also like voles, snakes, crawfish, worms and other creatures. Herons prefer to build their large bulky nests high in the top of tall trees—preferably trees which are made inaccessible by swamps or wetlands. Raccoons and humans are their worst enemies. Old nests are used year after year—and much like purple martins—older blue herons have strong attachments to their old nesting sites. They will return and remain year after year if they do not feel threatened. We in Almadale Farms are truly blessed by the presence of one of nature's most beautiful creatures.

Easter Egg Hunt Lots of Fun!

Thanks to Courtney Dukes, our Easter bunny Cameron Kawell, and her sister Sloan Tate who helped make our 3rd Annual Easter Egg Hunt a huge success again this year!



Semi-Annual Dues Payable July 1st



Let's Talk Turkey

Will Stafford

When I moved to a new Memphis subdivision in 1965, I chose the largest lot available—approximately 3/4 acre. At the time I felt that it was my calling to grow every type of fruit and nut tree regardless of the tree's suitability for my soil and the mid south climate. I had pear, pecan, filbert, Chinese chestnut, English walnut, apple, plum, nectarine and crab apple trees in addition to pomegranate bushes and a grape arbor. To top it off, I transformed a 20' by 30' plot into a 12 month organic garden. I also had on my 150' back lot line what may have been the only Shelby County planting of Russian olives—thorny and virtually impenetrable

I soon learned that all of these fruit and nut trees were very susceptible to multiple diseases and insects and required constant attention. There was one exception—the fig tree or bush—depending upon its training. While there are over 200 varieties of fig cultivars, my favorites were the Celeste, Kadota, Mission and the Brown Turkey.

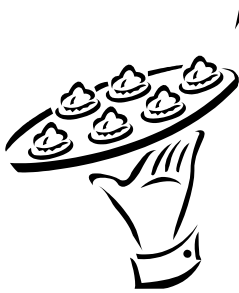
When we moved to Collierville, I took a cutting from my Brown Turkey and it is now thriving in our Almadale Farms back yard. Although the fig is generally thought of as a subtropical fruit suited only to mild climates, it does well here. If a freeze—such as the one we had in April—kills the leaves, it will usually spring back quickly.

Figs are outstanding for gardeners who don't want to fuss with spraying and pruning but like having a big crop of fresh, delicious figs. Brown Turkeys bear big, juicy fruit in early summer, and then set a heavier crop of smaller fruit in the fall. Clusters of figs grow close to the stem of the bush and are surrounded by deeply lobed leaves.



Figs live for many years, love our clay based soil if the drainage is good and need relatively little attention. Like all fast-growing semitropical plants, the fig responds quickly to a balanced fertilizer, but the amounts should be limited. I also like to pamper my Brown Turkey by giving it a little lime in February. Heavy mulch in the summer to retain moisture, and in the winter to protect against the weather, plus a spring application of good compost, will usually guarantee healthy, even growth if allowed to grow naturally.

If preferred, figs can be grown as trees and will reach heights of 15' to 30' feet. Figs are not really fruits in the botanical sense. They are actually a collection of closed-up flowers. While requiring no attention except for removing dead wood, the best news of all is that figs are normally pest and disease free. Don't you need a turkey in your back yard?



T.G.I.F.

Barbara Parkhurst

Many thanks to **Mark and Donna Johnke** for hosting the May Almadale Farms T.G.I.F. Everyone had a wonderful time...lots of food to eat and neighbors to meet! Call me today (861-5054) if you would like to host the next one. You supply the house and everyone else brings food and drinks! How easier could it be?

July & August Yard of the Month Winners



*Steve & Anissa Liberto
1923 Lonhill Drive*



*Pat & George Sisterhen
1757 Dymoke Drive*

Semi-Annual Dues Payable July 1st

Pool Committee Reminders

Bobby Haygood

- Please park on the pool side of the street only. Be aware the Collierville police will ticket cars parked in the wrong direction on the street.
- The pools are closed on Mondays. This includes the entire area inside the fence. No sunbathing on days the pool is closed. If a holiday falls on Monday, the pools WILL be open and closed the following Tuesday.
- Please leave your dogs at home if you are visiting the pool area. Dogs are not allowed in the pools or inside the fenced area or tied to the outside of the fence or tied to the clubhouse porch area.
- Please lower the umbrellas when you leave. Signs are posted on both gates as a reminder.
- The Emergency Phone is for 911 emergencies only. Push the button and an operator will talk directly to you.
- No diapers allowed in the pool. Please use "swimming disposables."
- Take your belongings with you. Lost and found will only be held one week.



Volunteers Needed For Parade!

Let's Show Our
Almadale Farms Patriotism!
Help Organize our 3rd Annual
"Celebrate America"
4th of July Parade.

Kids love this event! Decorate your bikes, tricycles, wagons, strollers, dogs, etc. with Red, White & Blue. Last year we had our parade route marked with flags and steamers. 50 kids, a dozen dogs & lots of moms & pops participated!

If you're available to host this year's parade, please call Courtney Dukes @ 850-1383 for more details.



Semi-Annual Dues Payable July 1st

Dues are payable January 1st and July 1st (\$480 per year—two payments of \$240). To avoid late charges, please be timely with your payments. **Invoices will be mailed out week of June 18. Due July 1st, considered late on July 10th**, a late fee of \$25 will be charged on July 15th. If you have any questions, please call Daphne at 861-1028.

Semi-Annual Dues Payable July 1st

Welcome New Neighbors

Douglas & Deborah Pace
1964 Templeton Circle S.

Michael Earps
& Stephanie Lutrell
1812 Percy Place

Fareed & Nasheen Shaikh
1709 Dymoke Dr.

Swing Set Wanted



If anyone has a wooden swing set and is interested in selling it, please call Colleen at 412-7725 or e-mail me at kfunas@comcast.net.

Piano Lessons

offered in my home!
Summer is a great time to try them out!

Contact
VAMusicMom@aol.com
for more details





Replacing Your Roof?

The procedure is the same as any other ARC submittal with the exception of the time delay. Because of the amount of requests, Daphne is approving these types of applications ASAP. Go to www.almadalefarms.org and download the Architectural Change form or stop by the clubhouse during Daphne's work hours.

1. Submit the completed form and type of shingles to be replaced. (The new shingles should be **3-Dimensional Architectural** shingles, not the basic "three-tab shingle" that some of the older homes have.)
2. Submit a sample if the color is different from the original roof.
3. Leave the form and sample with Daphne at the Clubhouse or leave it in her lock box by the office door.
4. Once processed, Daphne will contact you ASAP.
5. Call 861-1028 if you have questions.

ARC Changes Approved

Renee Samuels

Architectural/Landscape Change Requests are required for any change or addition to the exterior of your home and property. This includes, but not limited to, the addition of play sets, landscape changes including rock borders, pools, fences, patios, arbors, paint color changes, or any other structural alterations to one's house. **Fines will be issued if change or addition goes forward without approval.**

Bylaws allow for a 30 day turn around on all requests. **Please do not ask for immediate review.** This committee is made up of volunteers that give their time to aid our HOA. Feel free to drop off a request at the home of Renee Samuels (1879 Swynford) or the office at the clubhouse and it will be processed at the following meeting. Requests must be complete for consideration. Forms may be obtained from the website or from Daphne.

- 1870 Swynford Lane - exterior painting, roof
- 1879 Swynford Lane - roof
- 1834 Liles Lane - pool
- 1911 Almadale Farms Parkway - construction of new front landing, landscaping and rear landscaping
- 1886 McCool Forest Lane - playset
- 1878 McCool Forest Lane - roof
- 1802 Farish Downs Ct - rear arbor and front fountain
- 1751 Napier Woods - fieldstone, landscaping
- 1832 Hartwell Manor North - Exterior paint

Good To Know



The Tennessee Department of Transportation HELP trucks patrol the most heavily traveled freeways in Chattanooga, Knoxville, Memphis and Nashville seven days a week. They change tires, bring gas or other mechanical help to stranded motorists. You can call one of these green TDOT HELP trucks in for free assistance at 545-2677 or 495-1180 when you are in

Shelby county on Interstate 40 (west of Canada Road), I-240, I-55 or I-385 (Bill Morris Parkway).

Almadale Farms Neighborhood Watch National Night Out Against Crime



**Tuesday August 7th
@ the Clubhouse
Begins 6:30 p.m.**



Math Tutoring

Is math causing you stress and anxiety? Math Tutoring could help! Almadale Farms neighbor, Mrs. Elizabeth Perry, M.S. Ed. Is a licensed Math Teacher and Guidance Counselor with 8 years high school and college teaching experience. Please call for an appointment. 861-3793

Available for Babysitting
Chelsea Harkness
11/21/90—Birthday
Cell: 598-3600
Home: 861-4515

Semi-Annual Dues Payable July 1st

Quiznos Sub

In a Rush?

Save time and call in your order!

Houston Levee @ Wolf River

901-853-4009



FREE TANNING

\$20 VALUE

GOOD TOWARDS ANY PACKAGE

TAN-N-GO

Call 6Tan-N-Go
Tan-N-Go.com

Exp. July 31, 2007
One time use. See Store for Details.
Any Location



Collierville Marketplace Self Storage 988 Civic Center Drive 901-850-5655



1/2 off first full month for residents of Almadale Farms!

the color of home,
the color of life,
the color of certainty

CertaPro Painters
★★★★★

Call today to schedule your free estimate **800.GoCerta**
Or schedule online now at **certapro.com**



CertaPro Painters
★★★★★

Mitch Zaretsky
Owner
9160 Highway 64
Lakeland, TN 38002
Office 901.384.7020
Fax 901.328.6384

THINGS TO DO IN JUNE:

1. Spruce up my yard
2. Fresh paint inside
3. Box up extra "stuff" & put in attic
4. Call **BARBARA & SUE** to **LIST my house!!**

NOW is the BEST time of year to SELL.... Call the ALMADALE AGENTS!!



Crye-Leike, Realtors
Barbara Parkhurst
Sue Taylor
(901)218-1952
(901)493-6492

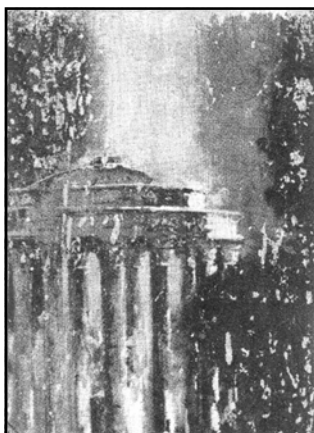
PAWS AND RELAX!! LLC

Alma Washburn & Linda Pritchard

Owners "You relax and let us take care of the paws!"

Almadale Farms Neighbors
1890 Newton Nook Dr.
Collierville, TN 38017

Phone: 861-0769
Cell: 270-0684/412-6238
Email: newtonnook@aol.com



RENÉ PLATTEN
Oil Painting Artist

1852 Hartwell Manor N.
Collierville, TN 38017
901-861-4183
Cell: 262-7651
Calebboy@aol.com



Collierville Pet Hospital
invites you to visit our newest location at Almadale Crossing.

9947 Wolf River Blvd. # 104
(corner of Houston Levee & Wolf River)
850-7330

A Trusted Name In Pet Care

D. H. Wright, D.V.M.
G. P. Weatherly, D.V.M.
S. G. Davis, D.V.M.

J. L. Murphy, D.V.M.
C. M. Grant, D.V.M.
L. A. Newman, D.V.M.

www.colliervillepet.com

**General & Cosmetic Dentistry
Porcelain Veneers, Porcelain Crowns
Teeth Whitening**



Almadale Farms Neighbor

Dr. James Brawner, DDS
5382 Estate Office Park
Between Poplar & Park Ave
767-4270

**Excellent
Roofing**

John K. Bennett
4829 Kaye Road
Memphis, TN 38117
901-335-5823 Phone
901-205-0492 Fax
johnkbennett@yahoo.com

"Top Quality, Great Prices"

Almadale Farms Reference Available

Licensed, Bonded & Insured
www.excellentroofing.com



*Subway Offers
Delicious Catering
for
Events of All Sizes*



1996 S. Houston Levee
@ Wolf River

Place Your Catering
Order by Phone, Fax
Or Online
(800)928-4315

**Need Dinner
Fast?**

Any 3 Regular
Footlong Subs
ONLY
\$11.99

All Day—Every Day

www.midsouthsubway.com



All Things Financial®

Stop by our Wolf River financial center today.
2055 S. Houston Levee • 854-5648

©2006 First Tennessee Bank National Association Member FDIC
www.firsttennessee.com

i sense

OPTOMETRY PLC

Min H. Son O.D.
2059 Houston Levee Rd. Suite 125 @ Almadale Crossing
901.850.8572

Accepting Davis Vision, Spectera, VSP, Cigna, BCBS TN
Colevision and Eyemed

Just arrived **JUICY COUTURE SUNGLASSES**
We also carry Armani, Ralph Lauren, Hugo Boss, Valentino,
Burberry, Gucci and much more!

Helping you see and be seen!
Call for an appointment, walk-ins always welcome!

MULAN
Bistro
CHINESE RESTAURANT

Free Delivery
850-5288

**Chosen as one of the
top 100 Chinese
restaurants
in the United States & the
only one in Shelby county!**

**10% OFF
WITH
THIS
COUPON!**

**Our new home is
a great place to insure yours**

Come see us at our new location and get a
competitive rate on homeowners insurance.

**Steve McMillian
Insurance Agency**



9947 Wolf River Blvd. #110
(Almadale Crossing)

854-5054

mcmills@nationwide.com



CELLULAR SALES

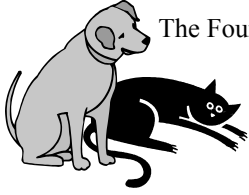
*Limited Edition! Motorola Razor V-3R,
Fire Red! 1.2mp camera w/8x zoom,
Bluetooth, Mp3 player built in, External
Memory Capable, and more! Come by
today and see this great looking phone!*



Adam Hobbs
1996 Houston Levee Rd #102

488-8720
(Next to Walgreens)

The 4th Is Not Celebration For Our Pets Alma Washburn



The Fourth of July is a great time for us to celebrate our Nation's freedom. What we don't realize is that it is a very traumatic time for our pets.

If your animal is afraid of thunderstorms, you can bet your animal is afraid of fireworks. With the 4th falling in the middle of the week this year, fireworks will be prevalent for two weekends both close at home and at a distance. While we celebrate, many of our animals suffer.

Here are some tips:

1. When fireworks are active in your area, either by neighbors or by a large firework display, please put your animal inside. 2. If you have electric fences for your animals, do not rely on them. 3. Allow your animal to take a safe haven in a quiet place such as a master bath. 4. Be cognizant of heavy panting and pacing.

Benadryl is a safe and wonderful over the counter drug that can be used by dogs (check

with your vet first). Please keep it on hand. If your animal is extremely afraid of thunder storms and fireworks please contact your vet concerning a drug called ACE. ACE is available in pill form—but may not be right for all animals. Sight hounds can not absorb ACE.

Dogs and cats are fight or flight creatures. With thunderstorms and fireworks, their only option is "flight." If you have an invisible fence for cats or dogs, most animals will take the shock as the try to "flight." Please ignore your invisible fence and put your animals in when you hear fireworks.

Folks, we are either pet owners or neighbors of pet owners. PLEASE be aware of your animals and your neighbor's animals during the celebratory season. By using common sense, you can save the life of a beloved pet.

In the next newsletter, we will share with you top 10 hazards of animals according to the ASPCA - you will be amazed.

Alma & Linda
Paws & Relax

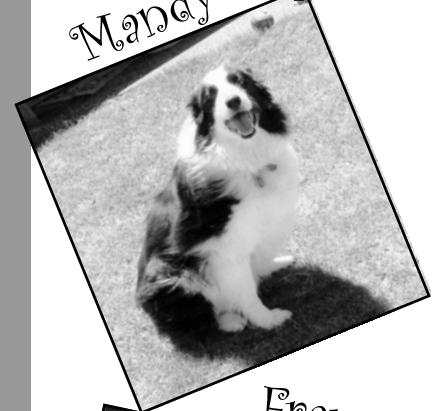
Neighborhood Notes

- **Dues:** Invoices will be mailed out the week of June 18th. Due July 1st, late July 10th, late fee of \$25 applied July 15th.
- **Clubhouse Rental:** Clubhouse rental does NOT include the pool. Private pool parties are not allowed.
- **Compliance Notices:** Violations will be sent out in the next few weeks. For a list of compliance issues, visit the Architectural Review Committee page of our website (www.almadalefarms.org).
- **Trash Carts & Recycling Bins:** Put away on Monday evening. Notices will be sent out for non-compliance. Automatic fine each week they are left out after 3 notices.
- **Lawn clippings:** Do not put lawn clippings on the curb before Sunday evening.
- **For Sale Signs:** Covenants allow for one sign of not more than six square feet per lot. Sign must be placed behind the sidewalk. No other signs are allowed.
- **Trailers:** Keep behind fence or in garage. Notices will be sent out for non-compliance. Automatic fine each time it is out after 3 notices.
- **Mailbox Flags and Latches:** Available from Daphne in the office. Email or phone her. Flags are \$5 installed and Latches are \$3 installed.
- **Lamp Repair Items:** Available from Daphne in the office. Email or phone her. Glass \$10 per pane installed. Socket assembly \$25 installed. Sensor \$25 installed.
- **Dogs:** Not allowed in the pool or the pool area.

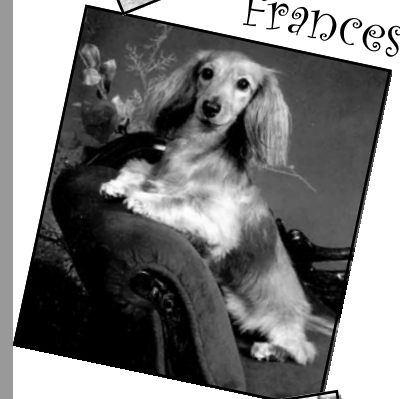
Scout



Mandy



Frances



Simon

S

View Almadale Pets
www.almadalefarms.org